

# **The *Presbyter***

## **JUNE ISSUE**

**June 2016 • Volume 45, No. 4**



## ***FIRST PRESBYTERIAN CHURCH***

321 West South Street, Kalamazoo, Michigan 49007-4708

**Telephone:** (269) 344-0119 • **Fax:** (269) 344-4645 • **Website:** [www.KalamazooFirstPres.org](http://www.KalamazooFirstPres.org)

### ***PRESBYTER HIGHLIGHTS—***

- ⇒ **ALL-CHURCH PICNIC - June 5** (page 2)
- ⇒ **STEWARDSHIP CAMPAIGNS - 2015 and 2016** (page 3)
- ⇒ **VOLUNTEER CORNER** (page 4)
- ⇒ **DIPPING DEEPER** (page 5)
- ⇒ **VACATION BIBLE SCHOOL - June 20-24** (page 6)
- ⇒ **NEW WILMINGTON MISSION CONFERENCE - July 23-30** (page 7)
- ⇒ **“MY LIFE AT CHURCH” (new series - page 10)**
- ⇒ **JUNE CALENDAR** (page 12) and **BIRTHDAYS** (page 13)





KALAMAZOO

# FIRST PRESBYTERIAN CHURCH

*Presbyter*

June 2016 Issue  
May 25, 2016  
Vol. 45, No. 4

321 West South St., Kalamazoo, MI 49007

(269) 344-0119

[www.KalamazooFirstPres.org](http://www.KalamazooFirstPres.org)

## WORSHIP SCHEDULE

Sunday Worship is at 10:30 a.m.  
(unless noted otherwise).

### June 5

#### **Third Sunday after Pentecost**

The Rev. Dr. Seth Weeldreyer

First readings will be  
presented by the children.

Second reading: 1 Kings 17:1-16

### June 12

#### **Fourth Sunday after Pentecost**

The Rev. Mary Van Andel  
Galatians 2:15-21; Luke 7:36-8:3

### June 19

#### **Fifth Sunday after Pentecost**

The Rev. Dr. Seth Weeldreyer

Psalms 42 and 43;

Luke 8:26-39

### June 26

#### **Sixth Sunday after Pentecost**

The Rev. Dr. Larry Boutelle

\* 2 Kings 2:1-2, 6-14;

Gal. 5:1, 13-25; Luke 9:51-62

\* The Scripture passages listed with an asterisk are from the *Book of Common Worship* (1993) and may change.



*Grounded in living faith,  
receiving diversity as a gift,  
we seek to reflect Christ's light  
in God's world.*

*Continually discerning God's  
vision of grace and peace,  
we share inspirational worship,  
spiritual nurture,  
compassionate service to others,  
and the pursuit of justice  
—all to the glory of God.*

## A Minute in Ministry

As we move into June, our congregation's visioning process will begin the next stage. Thank you, very much, everyone who participated in the many meetings and opportunities to offer perspectives, questions, and dreams for our ministry together. All responses received will be collated and passed along to the Vision Team to begin their work. At its April meeting, Session received from the Planning Team recommendations of individuals to serve on this Vision Team. The persons elected include Chris Bol, Jeanne Case, Ginny Dell, Stuart Deming, Brenda Noel, Kelsey Oliver, Joseph Sablan, Bill Sorensen, Ray Wicks, and Pam Zandt, who will join me, and Sue Johnson as leader of the process. I am grateful for, and excited about, the broad and balanced experience represented by these members!

By the time this *Presbyter* is published, we will have already met once to get oriented to the process ahead of us. We expect to meet regularly (bi-weekly?) throughout the summer, hoping to present a vision to Session by late August. When Session considers and approves the vision, we will present it to the congregation as early as possible in the fall. Please hold the members of the Vision Team in prayer for the important work ahead on behalf of Jesus Christ in our time and place. And please watch for further periodic updates about progress.

Concurrently, some conversation has already arisen about the transition in pastoral leadership we face in the months ahead. Before addressing future plans, I commend, with gratitude and celebration, the ministry of Mary Van Andel among us for over five years. Her witness to God's love has been "faithful and true" and will continue to enrich our life together for many years to come. As you feel moved in the next few months, I encourage you to express with her whatever gratitude and support you feel for how she has touched you personally and led our congregation's ministry and mission. We are planning a celebration later this summer. Please watch for more information!

Personnel Committee and Session have already begun to discuss the realities we face, and the scope of possibilities for staffing after Mary's retirement. No decision or course of action has yet been determined. We will attend to immediate needs for pastoral coverage with responsible diligence. And we will remain intimately aware of the Vision Team work (two members of Personnel Committee will serve on the team). Our intention is to begin concerted action as implications of the visioning work become clear.

In these times of transition and in every way we continue to serve, may we be guided by the foundation for ministry expressed in our Book of Order:

- ◇ "In the power of the Spirit, Jesus Christ draws worshipping communities and individual believers into the sovereign activity of the triune God at all times and places. As the Church seeks reform and fresh direction, it looks to Jesus Christ, who goes ahead of us and calls us to follow him."
- ◇ "The mission of God in Christ gives shape and substance to the life and work of the Church. In Christ, the Church participates in God's mission for the transformation of creation and humanity by proclaiming to all people the good news of God's love, offering to all people the grace of God at font and table, and calling all people to discipleship in Christ."

Grace and peace to you,

*Seth*

The Reverend Dr. Seth Weeldreyer, Pastor

## SESSION—2016

**Clerk of Session:** Allison Hammond

**Sam Beals (2018)**

Congregational Life,  
Property Maintenance

**Phyllis Buskirk (2016)**

Worship and Music

**Sam Clark (2017)**

\*Communications, Endowment

**Mason Coleman (2016)**

\*Personnel

**Ginny Dell (2016)**

\*Finance, Stewardship, Nominating

**Stuart Deming (2018)**

Endowment, Health Ministry

**Pat Farris (2017)**

\*Health Ministry, Worship and Music

**Diane Heckler (2017)**

Health Ministry

**Elaine Johns (2018)**

\*Worship and Music, Communications

**Sue Johnson (2018)**

\*Christian Education

**Heather Kortlandt (2016)**

\*Hospitality

**Barbara Liggett (2017)**

Personnel, Nominating

**Brian Nederveld (2018)**

Congregational Life, Hospitality

**Kelsey Oliver (2016)**

\*Congregational Life,  
Christian Education

**Rick Taylor (2016)**

Christian Education,  
Property Maintenance

**Laurie Tupper (2016)**

\*Outreach, Property Maintenance

**Jim Van Buren (2017)**

\*Stewardship, Communications,  
Finance, Outreach, Worship and  
Music, Property Maintenance

**Andrew VanderKlok (2017)**

\*Property Maintenance

**Ray Wicks (2017)**

Christian Education, Outreach

**Jonathan Willoughby (2018)**

Endowment, Finance, Stewardship

**Pamela Zandt (2018)**

Finance, Personnel

(indicates class year)

\* Committee chair or co-chair

## ALL-CHURCH PICNIC—June 5



Our All-Church Picnic is planned for June 5 immediately following worship! We will be going back to our “picnic roots” with hot dogs and hamburgers in the park! Please bring your favorite picnic side dish or dessert to share! Also, seating is limited so please bring a blanket or lawn chairs if you can. We can’t wait to see you there!! If you have any questions, contact Kelsey Oliver at [olivekel@mail.qvsu.edu](mailto:olivekel@mail.qvsu.edu) or (269) 903-1077.

## SESSION MEETING HIGHLIGHTS—May

The following motions were made and adopted:

- ♦ to approve the Request for Financial Appeals from the Worship and Music Committee to pay for handbells.
- ♦ to approve a revision to the FPC Policy on Self-employed Reimbursable Mileage Expenses to strike \$250 and insert 500 miles.
- ♦ to approve up to \$45,000 from the Capital Improvement Fund to replace the sanctuary roof.
- ♦ to approve the following people to serve on the Visioning Team.  
Elders on Session: Ginny Dell, Stuart Deming, Kelsey Oliver, Ray Wicks, and Pamela Zandt  
At-Large Congregants: Chris Bol, Jeanne Case, Brenda Noel, Joseph Sablan, and Bill Sorensen.

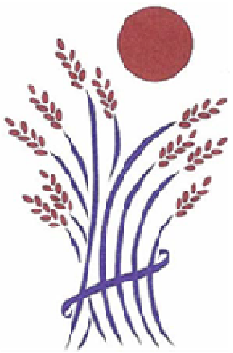
## Handbells Are Coming!

The Worship and Music Committee is pleased to announce that plans are underway to purchase a three-octave set of Malmrk Handbells for use in worship. The playing of handbells at last year’s Christmas Eve service generated considerable enthusiasm, and the committee feels the time is right to add these beautiful instruments to our music program.

Our Director of Music, Cindy Hunter, who has had experience with handbells, will direct the bell choirs. It is hoped and expected that this will give more members of the congregation—adults, youth, and children — an opportunity to participate in the music of regular Sunday worship services, as well as various special services.

Beginning in July, you will have the opportunity to purchase bells in honor or memory of special people in your life. Each bell will be permanently inscribed with the donor’s name and dedication. Bells will be available at various prices and all donations will be gladly received and acknowledged. Watch for more information about how you can participate in this exciting opportunity!

## STEWARDSHIP



*The Gifts of God  
for the People of God*

*Jesus said to them, "I am the bread of life.  
Whoever comes to me will never be hungry, and  
whoever believes in me will never be thirsty."*  
John 6:35 (NSRV)

As plans for the 2016 Stewardship Campaign are beginning to unfold, it is good to look back on the results of the 2015 campaign and give thanks to the members of the congregation for their generosity. The 2015 campaign concluded with 243 pledges, totaling \$609,375. So far this year, over 43% of the pledged amount has been received by the church.

All members of the congregation should feel proud of these results.

The majority of the church's expenses are non-discretionary, meaning that they are necessary for the operation of the church. The approximately \$880,000 expense budget includes non-discretionary expenses for personnel, along with building and maintenance expenses.

The largest discretionary expense is for our outreach to the community and the world. The 2016 budget for the Outreach Committee is \$75,900. It is of interest to note that more than 50% of our financial commitment is to the local community. The breakdown of the Outreach Committee budget can be seen in the accompanying chart.

## ART ON DISPLAY

Jerre James would appreciate any information for the FPC Archives about "art" now displayed in the church, or to be displayed in the future. Thank you!



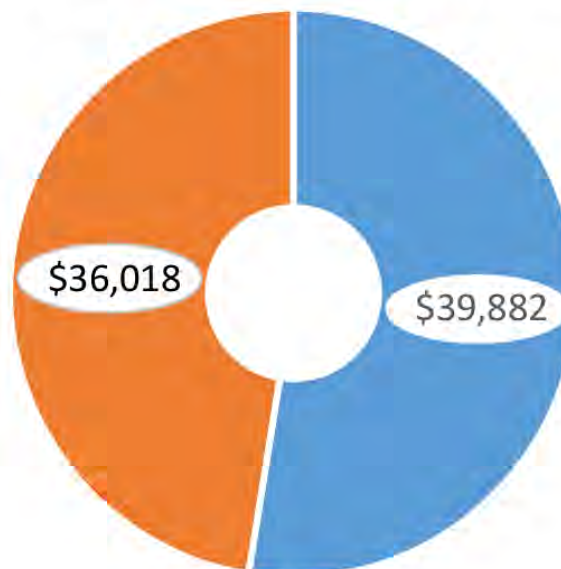
## 2016 BIRTHDAY OFFERING

Since 1922, the PW's Birthday Offering has helped fund mission projects that improve the lives of women and children around the world. We are asking for your support of this worthy project. Please make your check payable to "Presbyterian Women" and write "PW Birthday Offering" on the memo line. Envelopes are available in the Narthex and at the Lovell Street entrance. The deadline is June 10.

## 2016 Outreach Committee Budget

### Global

Presbytery of Lake Michigan - \$17,492  
PCUSA-Shared Mission - \$11,362  
Ghana Scholarships - \$3,266  
PCUSA-Mission Co-worker - \$1,932  
Synod/Covenant - \$1,047  
Disaster Assistance - \$920



**\$75,900 Total**

### Local

Ministry With Community - \$11,040  
Celebrate the Vision - \$6,440\*  
New Outreach Projects - \$6,279  
Open Doors - \$3,220  
Loaves and Fishes - \$2,392  
United Campus Ministry - \$1,932  
Deacons Conference - \$1,932  
North Presbyterian Church - \$1,196  
Habitat for Humanity - \$1,150  
Edison Project - \$1,012  
Drop In Care Center - \$920  
Kalamazoo Building Blocks - \$736  
Community Benevolence - \$552  
Downtown Community Literacy Center - \$460  
Rickman House - \$460  
CROP Walk - \$161

\*This item offset by donations

## CONGREGATIONAL DEACONS

### **Class of 2016**

Karen Hassler  
Kay Howson  
Judy Johnson  
Shari Schut  
Mary Smyser  
Jackie Stults

### **Class of 2017**

Bob Candido  
Kathy Cooney  
Lisa and John Diamond  
Nancy Klesert  
Nancy Maleitzke  
Sue Potts  
Joseph Sablan  
Colleen and Mike Sherrill

### **Class of 2018**

Dorothy Castor  
Karen Cooper  
Dan Dowswell  
Nancy and Keith Johnson  
Barbara Palmer  
Donna Schonveld



#### **Please note:**

If you have moved, or changed any contact information, please inform Ann Johnson in the church office, at [ann.johnson@kalamazoofirstpres.org](mailto:ann.johnson@kalamazoofirstpres.org) or call 344-0119, so she can keep your contact information up to date.

## VOLUNTEER CORNER

First Presbyterian Church Habitat for Humanity is looking for volunteers on the following Saturdays: June 4, June 11, June 18, and June 25, and July 9, 16, 23, and 30. Volunteers will meet at the Habitat for Humanity warehouse located at 1718 Fulford Street in Kalamazoo. Typical work involves cleanup, landscaping, painting, and light construction/destruction. For more information call Mike Boersma at (269) 720-1409.

Rickman House BINGO needs volunteers on the third Saturday of the month at 6:00 p.m. at the Rickman House. In addition to assisting with calling BINGO, volunteers are needed to assist residents with visual or hearing impairments. We appreciate all of the prizes that are donated, as well. For more information, call Mike Boersma at (269) 720-1409.

At Ministry with Community on the first Sunday of each month, 12-15 volunteers from FPC serve Sunday dinner to about 175 of our downtown neighbors. Many members of our congregation—including several of our younger members—give generously of their time to share Christ's love in this way. If you can help on any "first Sunday", please contact Ruth Moser at [ruthmoser@outlook.com](mailto:ruthmoser@outlook.com).

Pine Island Presbyterian Church has a community garden on their property west of 6th Street on the north side of Q Avenue (Centre). They are looking for people to assist them with the gardening. They have requested approval as a project so that Master Gardeners can get volunteer hours for their work. They have four "garden teams" that are working on different days and times. If interested, please contact the following for the day/time that works best for you:

#### **Monday, 9:00 a.m.**

—contact Carol Pratt at 501-5234

#### **Wednesday, 9:00 a.m.**

—contact Joan Oorbeck at 375-1453 or 216-1593

#### **Wednesday, 5:00 p.m.**

—contact Joan Oorbeck (Vespers service at 5:30, if interested)

#### **Friday, 9:00 a.m.**

—contact Joan Oorbeck



## CENTS-ABILITY

***Happy are those who give food to the poor.*** Psalm 146:5-8

Everyone feels hungry on a daily basis. Most people are able to satisfy this craving and need. People who suffer chronic hunger don't have the option of eating when they are hungry. They have a primary need: how to feed themselves and their children today and tomorrow.

Food insecurity is the formal term for this condition. People living with food insecurity lack a stable, reliable means of getting the meals they need. We can help, because God has given us the heart and hands, along with the instructions, to provide food and other resources to the poor.

The children understand that, through different programs here at First Presbyterian Church, they can provide relief for those who are hungry.

- 1 Collect coins in the Cents-Ability cups for our STOP HUNGER NOW and future programs that address hunger.
- 2 Bring canned and boxed food for our Loaves & Fishes barrels.
- 3 Come and serve a meal, or provide fruit or a dessert for the 100 men, women, and children who eat with us at Celebrate the Vision on Wednesday evenings.
4. Serve dinner at Ministry with Community on the first Sunday of the month.
5. Make a donation and/or walk in our annual CROP Hunger Walk.

**Cents-Ability** is a program in which we are participating. The children and members of the congregation are asked to contribute a few cents to the Cents-Ability cups every time they sit down to eat. These funds will be used to help combat hunger through different agencies and programs.

For the month of May, we will be collecting money for STOP HUNGER NOW, an organization that gets food and life-saving aid to the world's most vulnerable people, and works to end global hunger in our lifetime. Established in 1998, it has provided more than 225 million meals in 73 countries. Based in Raleigh, North Carolina, STOP HUNGER NOW operates throughout the U.S. and through affiliates in developing countries.

On **June 5** (Children and Youth Sunday), we will use the money we have collected to purchase and then package food packets for the world. We are hoping you will encourage us with your contributions, as well as your assistance in packaging these meals.

Matthew 25:31-46

***I was hungry and you fed me.***

Micah 6:6-8.

***Do justice, love kindness, and walk humbly with God.***

## DIPPING DEEPER

**June 7, 14, 21, 28  
and**

**July 12, 19, and 26**

**5:30-6:45 p.m.**

Perhaps you've heard from some of the more than 50 "Dipper" alumnae in the congregation how much they've appreciated a Dippers Group they participated in. If you're a woman who would love to come to know and care about other women in the church, being a "Dipper" might be for you. The summer "Dippers" group provides a structured opportunity to learn basic spiritual practices, talk about what is significant in our lives, and treasure one another.

If you're interested, here are some details you will need to know.

- ◆ Because "Dippers" meet for a short-term commitment, participants should plan to be present for at least 5 of the 7 gatherings, recognizing that the first two sessions are essential for the formation of the group.
- ◆ If childcare is needed, please make that known when you register.
- ◆ New participants must be added by June 14. The time block will be honored.
- ◆ The group will have a maximum of 12, first-come, first-served.
- ◆ At the first meeting, time and day will be discussed. If there is a better time than Tuesday at 5:30, the group may choose to shift to a different—but consistent—meeting time.
- ◆ Light, nourishing snacks will be provided.

If you have questions, please call Mary Van Andel at (269) 857-7010.

## CHURCH SCHOOL SCHEDULE

June and July 2016

Preschool – 5<sup>th</sup> Grade

### Sunday, June 5

Children and Youth Sunday  
Communion  
All-Church Picnic

### June 12 through July 3

Church School will be in recess  
for four weeks and  
will resume meeting  
on July 10.

### June 20-24

Vacation Bible School

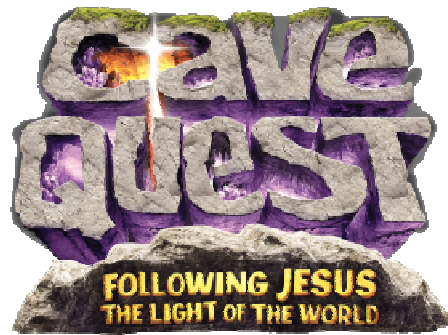
### July 10

Summer Church School  
begins.



For Church School information,  
contact Pat Stromsta at  
[pat.stromsta@kalamazoofirstpres.org](mailto:pat.stromsta@kalamazoofirstpres.org)

## JUNE 20—24 Cave Quest Vacation Bible School



At Cave Quest Vacation Bible School, kids experience God's Word in surprising and unforgettable ways! Each day, leaders reinforce one simple Bible truth, which makes it easy for kids to remember it and apply it to real life.

Kids will spend each day spelunking through field-tested activity stations with their Cave Crews (small groups of up to 5 kids and one leader). Every station is designed to reinforce the daily Bible Point in a hands-on, interactive way that keeps everyone engaged.

### Daily Themes:

- Day 1: Jesus gives us hope.
- Day 2: Jesus gives us courage
- Day 3: Jesus gives us direction
- Day 4: Jesus gives us love.
- Day 5: Jesus gives us His power.

Downtown Vacation Bible School is scheduled for June 20 – 24 from 9:00 a.m. – 12:00 noon at First United Methodist Church. There is no cost.

Volunteers are needed to serve as Crew Leaders and Assistant Crew Leaders. Other positions are also available.

Registration and Volunteer forms and additional information are available at the Cave Quest exhibit in the Gathering Place. The forms have been uploaded to the church website and are accessible from the home page, or here is the direct link:  
<http://goo.gl/ydduJe>.

Please see or contact Pat Stromsta  
for additional information

## YOUTH MINISTRY

**June 5**

LAST YOUTH GROUP MEETING OF THE SCHOOL YEAR!!!

5:00-7:00 p.m.

Westminster Presbyterian Church

Picnic and outdoor fun and games. Bring a friend!



## NEW WILMINGTON MISSION CONFERENCE JULY 23-30

NWMC is a perfect opportunity for families or young people to come together for a week, learning about mission and what God is doing all over the world through the PCUSA. There are specific programs for all age groups; it doesn't matter if you are 2 or 92!

Middle school and high school students can attend without their parents. Younger children must come with at least one parent. Each age group has specific speakers and programs every day. There are two times during the day where everyone at the conference comes together for worship, speakers, and fun.

### Prices

Adults - \$455

College, high school and middle school students - \$390

K-6 grade - \$275

Pre-school - \$170

College and high school students can serve in the dining hall and pay only \$270. Middle school students can help carry luggage and pay only \$340.

There are also staff opportunities for adults. You may contact Sharon Bradford at [mommabradford@gmail.com](mailto:mommabradford@gmail.com) or (269) 492-4822 if you are interested in serving with young children all week. Staff fee is \$150.

The fees cover lodging, food, and programming for the week. We stay in college dorms and eat in the college cafeterias.

Contact Rob Bradford if you have any questions.  
(269) 806-5196 or [bradfordrr@gmail.com](mailto:bradfordrr@gmail.com)

## ADULTS

### LECTIONARY STUDY

Sundays at 9:00 a.m.

You are invited to join other church members in the weekly lectionary study prior to Worship. During this time, we observe and discuss basic facts about the Scripture that will be used in the day's worship service.

Together we attempt to interpret the meaning of the passages and to discover implications of the text for growing in Christ.

### WOMEN'S THURSDAY MORNING BIBLE STUDY

This group will continue to meet (except for June 23).

### WOMEN'S WEDNESDAY NIGHT BIBLE STUDY

This group will continue to meet during the summer months.



**Check the weekly Sunday  
Announcements for  
detailed information.**

# CHURCH ACTIVITIES

## RECURRING ADULT EDUCATION ACTIVITIES

### SUNDAYS

9:00 a.m.

**Savoring the Lectionary**  
(weekly)

*Focus on the lectionary passages that guide Worship each Sunday.*

9:15 a.m.

**Reading Aloud**  
(weekly)

*Conversations about a selected book.*

### MONDAYS

7:00 p.m.

**Thoughtful Readers**

(fourth Monday of each month, except during the summer)

*Book discussions: one book each month, chosen by the group.*

### TUESDAYS

7:00 a.m.

**Men's Fellowship**  
(weekly)

### WEDNESDAYS

4:00 p.m.

**Men's Community Bible Study**  
(every Wednesday)

5:30 p.m.

**Celebrate the Vision**  
(every Wednesday)

*An outreach ministry of fellowship, food, and faith.*

7:00 p.m.

**Wednesday Evening Women's Bible Study**

(third Wednesday of each month)

5:30 p.m.

**Wednesday Night Men's Group**

(second Wednesday of each month)

### THURSDAYS

9:30 a.m.

**Women's Bible Study**  
(every Thursday)

**PLEASE NOTE:** Exceptions to dates and times of these regularly scheduled meetings may occur. Please watch the weekly Announcements for possible changes.

### SUMMER CHOIR

The Summer Choir will begin on Sunday, June 12. Rehearsals are at 9:30 a.m. in the Lower Level; the choir sings at the 10:30 worship service. Please consider sharing your love of music by joining us, as you are able, during the months of June, July, and August. No contribution is too small! All ages and voice parts are welcome, middle school through adult. For more information, contact Cindy Hunger, Director of Music, at (269) 377-2478.

### MONTHLY "LUNCH BUNCH"

**June 3 (Friday), 1:00 p.m.**

Check the weekly Announcements for information.

### MONTHLY WEDNESDAY NIGHT MEN'S GROUP

**June 8 (Wednesday), 5:30 p.m.**

A group for men of all ages meets on the second Wednesday of each month at the home of Jeff Ross, 4824 South First Street. It is a great time of fellowship and conversation about faith as we grow together in God's Spirit, seeking the fullness of peace, joy, and love. All men are welcome to attend. If you have any questions, please contact Jeff Ross or Seth Weeldreyer.

**BOOKS and BAGELS** will meet again during the summer on Sunday mornings, prior to Worship. This is an informal gathering that provides an opportunity to discuss books and/or issues while enjoying coffee, juice, and goodies. We will meet from 9:00 a.m. to 10:15 a.m. A tentative schedule includes the following:

July 10—Aedín Clements

July 17—Dr. Grace Tiffany

July 24—the Reverend Larry Farris

July 31—Stuart Deming

August 7—Linda Mah

August 14—Dr. Mark Loehrke

Additional information will be in the July/August issue of the *Presbyter* and in the weekly Announcements during the summer.

**GROUPS AND ACTIVITIES  
"ON SABBATICAL" FOR THE SUMMER**

- All-Church Sunday Breakfast
- Hearts-to-Hands Needleworkers
- Martha Circle
- Thoughtful Readers
- Deacons (meetings will resume on August 8)

# Outreach and Community Service

## **"STOP HUNGER NOW"** **"30 days or 30 Dollars!"**

The Congregational Life Committee would like to thank you for your support of the Stop Hunger Now project. We are very excited about your willingness to contribute both your time and money to this effort.

Stop Hunger Now is an organization driven by the vision of a world without hunger. Their mission is to end hunger in our lifetime by providing food and life-changing aid to the world's most vulnerable, and creating a global commitment to mobilize the necessary resources.

In just under two hours, a group of 40 to 50 volunteers can package 10,152 nutrient-rich meals. On June 5, following the All-Church Picnic, we will hold our Meal Packaging Event here at FPC. Our goal is to package at least 10,152 meals (the minimum number requested by Stop Hunger Now). In addition, we need to raise funds to pay for these meals at a cost of \$0.29 per meal. We are hoping to raise \$3,500.00 and to have at least 50 volunteers participate in this event.

This is where YOU come in. Volunteers may sign up until the day of the event. All ages are encouraged to come and join in the fun. It is not too late to help. We will continue to collect money for this project through the third week of June. A contribution of \$30.00 will pay for over 100 meals. We are asking you to prayerfully consider a donation.

**For more information or to make a contribution,  
please contact Bev Murray at (269) 352-0079  
or [bhmurray@charter.net](mailto:bhmurray@charter.net).**



## **STOP HUNGER NOW**



## **COMMUNITY GROUPS THAT MEET AT FPC**

### **AA**

**Mondays and Thursdays at noon.**  
**Saturdays at 10:00 a.m.**

### **Boy Scouts**

**Mondays at 6:00 p.m.**

### **Crescendo Academy of Music**

**Occasional Sunday afternoons**

### **Food Addicts**

**Wednesdays at 4:00 p.m.**

### **Kalamazoo Pipe Band**

**Tuesdays at 6:00 p.m.**

### **Kalamazoo Singers**

**Mondays at 7:00 p.m.**

### **KNOW**

**First and third Mondays  
at 5:00 p.m.**

### **MRC Industries / ASK**

**First and third Tuesdays**

# Church Life



## OUTREACH COMMITTEE

Moderator: Laurie Tupper

The mission of the Outreach Committee is to promote faithful service both to our local community and to the wider world. Here are some programs in which we participate on an ongoing basis.

- **FPC Celebrate the Vision**  
(for our neighbors)  
Contact: Pat Stromsta
- **Center for Transformation**  
Contact: Carole Birch
- **Edison School Project**  
Contacts: Joyce Petro  
Carol Payne Smith  
Sue Johnson  
Joseph Sablan
- **Ghana Partnership**  
Contact: John Petro
- **Kalamazoo Building Blocks**  
Contact: Kim Cummings
- **Kalamazoo Habitat for Humanity**  
Contact: Mike Boersma
- **Kalamazoo Loaves and Fishes**  
Contact: Dick Baker
- **Ministry with Community:  
Food Pantry**  
Contact: Sam Clark
- **Nicaragua Partnership**  
Contact: Larry Boutelle
- **Rickman House BINGO**  
Contact: Mike Boersma
- **United Campus Ministry**  
Contact: Miranda Howard

## MY LIFE AT CHURCH

Welcome to "My Life at Church" - an ongoing series of first-person accounts of living with a special need, brought to you by members of our congregation and sponsored by your Health Ministry Committee.

This month's account is from an interview with Phyllis Curtis and Chuck Madden about living with impaired vision.

Chuck's vision has been deteriorating for the past thirteen years, Phyllis' for the last six. Both are now legally blind; Chuck is not able to read at all, and Phyllis can read only some of the large-print bulletin provided for worship each Sunday. They often cannot identify a person speaking to them and cannot see what is on a buffet table or even the doughnuts at coffee hour. Both are able to fill their coffee cups by listening carefully to tell when they are full! Because they are long-time members, they are both able to get around the building pretty well, but they are not able to read materials – even posters – for events like the recent Earth Day display.

Phyllis appreciates the large print bulletins and hymns and is especially helped when printed materials have high contrast between the ink color and background color. Black ink on white paper, for example, is much easier to see than black on blue. A red background makes reading impossible. Chuck has devices that read books, newspapers, and magazines to him at home, and Phyllis listens to books on tape, but would also enjoy having some things read to her, as she has no other assistance device.

Phyllis and Chuck would both be helped if people would introduce themselves when greeting them. And gentle offers of help – such as "Tell me how I can help you" – when they're getting coffee or going through a buffet line are greatly appreciated. Reading material like the Earth Day posters to them would be a big help, as well.

Both Chuck and Phyllis feel that church members are thoughtful about their special need, and both are willing to be a resource for others who have questions or concerns about impaired vision. Chuck has even given presentations on this topic to community groups. Phyllis is grateful to all the people who assist when she needs transportation to many weekly destinations.

"Thank you" to both of these good folks for sharing their views with the congregation!

# Outreach and Community Service

## EDISON SCHOOL OUTREACH PROJECT ~ Highlights of the 2015-16 School Year ~

- Our church is completing its 16<sup>th</sup> year of partnering with Edison School. Last September, when the school year began, the supply shelves were empty. Very quickly, our congregation provided notebooks, pencils, markers, crayons, scissors, glue sticks, antiseptic wipes, facial tissues, hand sanitizers, and SNACKS! This support continued throughout the year. In addition, financial contributions were used to purchase many special items needed at the school, such as coffee and related supplies for their hospitality center in the school lobby.
- More than 50 volunteers regularly assisted individual students or groups of students with math and reading skills once or twice a week. Tutors built meaningful one-on-one relationships with students and teachers. In addition, volunteers undertook special projects, helped with field trips, and found other creative ways to support teachers and students.
- Funds provided by the FPC Outreach Committee were used to purchase a book for each of the 340 students in Pre-Kindergarten through 5<sup>th</sup> grade.
- Our church's Hearts-to-Hands Stitchers provided beautiful book caddies for students' chairs.
- Our faithful bakers provided monthly birthday treats in all classrooms.
- Our *canine friends* were quite popular. Students loved reading to Duke, Lacy, Riley, and other dogs, whenever they were brought into classrooms.
- Volunteers assisted students with planting vegetables in the greenhouse and with caring for the school grounds. They also assisted students with placing recycle bins in classrooms—helping Edison School to “Go Green.”

Edison Principal Julie McDonald, classroom teachers, staff, and students frequently mentioned how grateful they were for the many ways First Presbyterian Church has supported their school. The Edison Project has grown and expanded its mission to the school through the years. In closing, I wish to thank my co-leaders, Carol Payne Smith, Sue Johnson, and Joseph Sablan for their dedication to this project. — *Joyce Petro*

For more information, please contact:

Joyce Petro - (342-6817) or [joyce@petroclan.com](mailto:joyce@petroclan.com)

Carol Payne Smith - (388-2278) or [paynesmith@aol.com](mailto:paynesmith@aol.com)

Sue Johnson - (276-9216) or [suebird.johnson@gmail.com](mailto:suebird.johnson@gmail.com)

Joseph Sablan - (773) 569-6243 or [richieandjoey@sbcglobal.net](mailto:richieandjoey@sbcglobal.net)



## EDISON SCHOOL AND PEACEJAM

Loy Norrix High School has a chapter club of PeaceJam, an international organization that recruits students to work on community service projects. ([peacejam.org](http://peacejam.org))

This year PeaceJam requested, and was approved for, funding assistance to enable them to continue for the 10th year their project at Edison Elementary School. From mid-April through May, the high school students help fourth-grade students with their literacy and comprehension skills. Then they take them to Binder Park Zoo to see the animals and read the signs!

PeaceJam also has an book fair for the school, to promote reading. In addition, they take the fifth-graders to WMU for a College-bound Engineering Day, where all the participants wear identical shirts and the students do many hands-on projects and see some national engineering projects, as well.

These programs complement our church's commitment to Edison and to literacy.



# FPC Calendar - June, 2016

**PLEASE NOTE:** A schedule of *community groups* that meet at FPC is on page 9 of this issue of the *Presbyter*.

## Wednesday/1

- 9:00a Hearts-to-Hands Card Ministry
- 12:00p FPC Librarian on site
- 3:00p DCLC
- 4:00p Men's Community Bible Study
- 5:30p Celebrate the Vision: dinner
- 6:15p Celebrate the Vision: worship

## Thursday/2

- 9:30a Women's Bible Study
- 11:00a FPC Librarian on site
- 11:00a DCLC
- 7:00p [no FPC Choir rehearsal]

## Friday/3

- 8:30a Yoga
- 1:00p Lunch Bunch (*off site*)

## Saturday/4

(no FPC events today)

## Sunday/5

- 9:00a Lectionary Study
- 9:00a Prayer Partners
- 9:15a Reading Aloud
- 9:30a [no Choir rehearsal]
- 10:00a Childcare
- 10:30a Worship in the Sanctuary  
Communion served
- 10:45a [no Church School]
- 12:00p All-Church Picnic
- 12:45p Ministry with Community  
(*FPC serves the meal today*)
- 1:00p "Stop Hunger Now" Meal-  
packaging
- 5:00p Youth Group at Westminster  
Presbyterian Church

## Monday/6

- 1:00p Hearts-to-Hands Stitchers
- 7:00p Green P's

## Tuesday/7

- 7:00a Presbyterian Men's Group
- 10:00a Weekly Staff Meeting
- 12:00p Bulletin deadline
- 1:00p [no class today]
- 1:00p FPC Archivists
- 5:30p Dipping Deeper

## Wednesday/8

- 12:00p FPC Librarian on site
- 3:00p DCLC
- 3:00p [no Martha Circle today]
- 4:00p Communications Committee
- 4:00p Men's Community Bible Study
- 5:30p Men's Group (*off site*)
- 5:30p Celebrate the Vision: dinner
- 7:00p Outreach Committee

## Thursday/9

- 9:30a Women's Bible Study
- 11:00a FPC Librarian on site
- 11:00a DCLC
- 6:00p Prop. Maintenance Committee
- 7:00p [no Choir rehearsal]

## Friday/10

- 8:30a Yoga

## Saturday/11

(no FPC events today)

## Sunday/12

- 9:00a Congregational Life Committee
- 9:00a Lectionary Study
- 9:15a Reading Aloud
- 9:30a Summer Choir rehearsal
- 10:00a Childcare
- 10:30a Worship in the Sanctuary
- 10:45a [no Church School]
- 5:00p [no Youth Group until fall]

## Monday/13—Presbyter deadline

- 7:00p [no Deacons meeting until  
August 8]

## Tuesday/14

- 7:00a Presbyterian Men's Group
- 10:00a Weekly Staff Meeting
- 12:00p Bulletin deadline
- 1:00p Class: "Talking about God and  
Our World" (final class)
- 1:00p FPC Archivists
- 5:30p Dipping Deeper

## Wednesday/15

- 12:00p Communications Committee
- 12:00p FPC Librarian on site
- 3:00p DCLC
- 4:00p Men's Community Bible Study
- 5:30p Celebrate the Vision: dinner
- 7:00p Women's Bible Study

## Thursday/16

- 9:30a Women's Bible Study
- 11:00a FPC Librarian on site
- 11:00a DCLC
- 11:30a [no Stewardship Committee]
- 12:30p [no Finance Committee]
- 7:00p [no Choir rehearsal]

## Friday/17

- 8:30a Yoga

## Saturday/18

- 6:00p BINGO for Rickman House  
residents (Country Meadows  
Apts., Gull Road)

## Sunday/19

- 9:00a Christian Education Committee
- 9:00a Lectionary Study
- 9:15a Reading Aloud
- 9:30a Summer Choir rehearsal
- 10:00a Childcare
- 10:30a Worship in the Sanctuary
- 10:45a [no Church School]

## Monday/20

- 9:00a Vacation Bible School  
at First Methodist Church
- 5:30p Personnel Committee
- 6:00p Health Ministry Committee

## Tuesday/21

- 7:00a Presbyterian Men's Group
- 9:00a VBS-First Methodist
- 10:00a Weekly Staff Meeting
- 12:00p Bulletin deadline
- 1:00p Archivists
- 5:30p Dipping Deeper

## Wednesday/22

- Presbyter* folding/labeling/mailling
- 9:00a VBS-First Methodist
- 12:00p FPC Librarian on site
- 3:00p DCLC
- 4:00p Men's Community Bible Study
- 5:30p Celebrate the Vision: dinner
- 6:30p [no Session meeting]

## Thursday/23

- 9:00a VBS-First Methodist
- 9:30a [no Women's Bible Study today]
- 11:00a FPC Librarian on site
- 11:00a DCLC
- 7:00p [no Choir rehearsal today]

## Friday/24

- 9:00a VBS-First Methodist
- 8:30a Yoga

## Saturday/25

## Sunday/26

- 9:00a Lectionary Study
- 9:15a Reading Aloud
- 9:30a Summer Choir rehearsal
- 10:00a Childcare
- 10:30a Worship in the Sanctuary
- 10:45a [no Church School]

## Monday/27

- 7:00p [no Thoughtful Readers tonight]

## Tuesday/28

- 7:00a Presbyterian Men's Group
- 10:00a Weekly Staff Meeting
- 12:00p Bulletin deadline
- 1:00p Archivists
- 5:30p Dipping Deeper
- 7:00p Worship & Music Committee

## Wednesday/29

- 3:00p Library open
- 3:00p DCLC
- 4:00p Men's Community Bible Study
- 5:30p Celebrate the Vision: dinner

## Thursday/30

- 9:30a Women's Bible Study
- 11:00a FPC Librarian on site
- 11:00a DCLC
- 7:00p [no Choir rehearsal]

# JUNE Birthdays

**1**  
Bruce Birkel  
Bridgette Bol  
Shirley Gerpheide  
Greg Macomber  
Thomas Owen  
Ruthie Tyler  
Harrison Willoughby

**2**  
Sam Carrel  
Angie Jonas  
Adena Leibbrand  
Mark Olmsted  
Melanie Sherrill

**3**  
Leona Hefner  
Katherine Lozeau  
Charri Withrow

**4**  
Becky Chambers  
Elizabeth Coryell  
Shawn Mattingly

**5**  
James Curtis  
Katherine Millar  
Maureen Willoughby

**6**  
Amy Coon  
Matthew Johnson  
Jeanene Lewis  
McKenzie Pessetti

**7**  
Nicholas Gleaton  
Matthew Grupe  
Sandra Hintz  
Pete Jarrad

**8**  
Michael Baer  
Whitney Hoag  
Ruth Morris  
Sally Pitt-VanBuren  
Alex Schmiede  
Emily Stuut

**9**  
Ruth Abbott  
Becca Coryell  
Allison Diamond  
Christine Yankovich

**10**  
Diane Johnson  
Julia Weaver

**11**  
Erin Arwady  
Connie Camburn  
Richard Coryell  
Nancy Raklovits

**12**  
Dennis Engers  
Sylvia Jorth

**13**  
Carla Kennedy  
Bill Sorensen

**14**  
Phylis Mahoney  
Stephanie Mellis  
Jacalyn Todd

**15**  
Linda Bower  
Craig Misner

**16**  
Brian Crabb  
Kelton Dalm  
Ken Kirton  
Leora Knickerbocker

**17**  
Gail Dukes  
Jesse Ford

**18**  
Garrett Boersma  
Gary Brown  
Marten Compton  
Matt Goodman

**19**  
Sarah Lozeau  
Joel Shepherd  
Nathaniel  
Weeldreyer

**20**  
(none)

**21**  
Ava Coon  
Terrie Forsch

**22**  
Nathan Connor  
Sue Henrickson  
Minnie LaPoint  
Mark Rey

**23**  
Matthew Schreiner  
Dianne Shaffer  
Joanne Stewart  
Morgan  
Vander Veen

**24**  
Christian Baer  
William Baer  
Barbara Baker  
Eric Kimm  
Richard Stewart

**25**  
Bill Birch  
Chris Steele

**26**  
Rand Arwady  
Jack Schnur  
Colleen Sherrill

**27**  
Anna Miedema  
Rosa VanHeest  
Aidan Ward  
Suzanne Weeldreyer  
Priscilla Willson

**28**  
Sara Forsch

**29**  
Amy Harik  
William Lee  
Gayle Sparks

**30**  
Phyllis Curtis  
Richard Raklovits



## 50-Plus Years of Membership —Congratulations!

As a monthly feature, each *Presbyter* includes an “anniversary-by-month” list of our members who have been a part of the FPC family for 50 years or more. Here you will find the names of these members, listed during the anniversary month of when each one joined the church. The entire 12-month list is printed in the Annual Report.

### JUNE Anniversaries

<u>Name of Member</u>	<u>Date Joined</u>	<u># Years</u>
Ann Hanselman Ihling	June 16, 1940	76
Lois Elferdink	June 16, 1955	61
Diane Pullan Johnson	June 16, 1957	59
Mary Lou Boughton	June 3, 1965	51
Bill Kelser	June 3, 1965	51

## PASTORAL CARE AND HOSPITAL VISITATION

An important part of our ministry at First Presbyterian Church is to provide pastoral care, including hospital visits. When a church member is admitted, hospitals are no longer permitted to notify the home church. We depend on members to call the church when a family member is hospitalized or needs a pastoral call.

Pastoral care is provided by the pastors, retired ministers from the congregation, and also by the Health Ministry Coordinator. Every attempt is made to visit hospital patients on a regular basis, even on weekends.

Those doing hospital calling would appreciate knowing when any member needs a visit or special attention. Please call the church office, 344-0119.

If your call is an emergency and you are unable to reach a person at this number, please call one of these staff members:

Seth Weeldreyer  
(269) 283-4048

Mary Van Andel  
(269) 857-7010

Ann Ross  
(269) 217-6193



**Join the Health Ministry Committee this summer  
for a 3-week series of classes:**

**Have you thought about this...?**

**July 10, 2016**

Mary VanAndel

**"Challenging Conversations"**

How we approach conversations with loved ones about no longer driving, moving to assisted living, end-of-life wishes, and other topics.

**July 17, 2016**

Mary VanAndel

**"Funeral Planning"**

How we prepare for a "good death", how we want our body cared for after death, wishes we have for the funeral service itself, and other topics.

**July 24, 2016**

Debra Lindstrom, PhD, OTRL, FAOTA,  
Professor Department of Occupational Therapy,  
WMU AARP "HomeFit" program.

How to modify our homes to accommodate our aging needs.

Join us in Room 314-315  
immediately following Worship  
for these informative classes.

Childcare will be provided.

**See you then!**

# Our Life Together

## Assistance for Worshippers

**Hearing Assistance Devices** for worship services can be requested from any usher, or you may call the church office in advance.

Copies of **Large-Print Bulletins** and Announcements are available every Sunday morning. Ask one of the ushers for a copy.

If you would like to receive **weekly e-mail updates about events** in the life of FPC, please contact Ann Johnson at 344-0119 and ask that your e-mail address be added to the list.

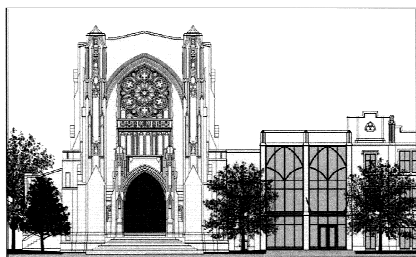
**CD Ministry** provides recordings of the Sunday morning services. Please stop in the office or call 344-0119 to place an order.

**Gluten-free Communion Wafers** are available at all communion services at First Presbyterian Church.

## Presbyter

### PRESBYTER DEADLINES

**July/August issue**—deadline is June 13 (will be mailed June 22)



## Parish Associates

### Parish Associates:

The Reverend Dr. Larry Boutelle, [boutelle2@gmail.com](mailto:boutelle2@gmail.com)  
The Reverend Liz Candido, [ecandido@kzoo.edu](mailto:ecandido@kzoo.edu)  
The Reverend Larry Farris, [farrislw@gmail.com](mailto:farrislw@gmail.com)

### United Campus Ministry Pastor and FPC Parish Associate:

The Reverend Kathleen Robertson King, [ucmkrking@yahoo.com](mailto:ucmkrking@yahoo.com)

**Pastor Emeritus:** The Reverend Dr. David W. McShane

## FPC STAFF

(269) 344-0119

(telephone extensions are listed below)

### Pastor

**The Reverend Dr. Seth Weeldreyer**

[seth.weeldreyer@kalamazoofirstpres.org](mailto:seth.weeldreyer@kalamazoofirstpres.org)  
Ext. 202

### Associate Pastor

**The Reverend Mary Van Andel**

[mary.vanandel@kalamazoofirstpres.org](mailto:mary.vanandel@kalamazoofirstpres.org)  
Ext. 203

### Christian Education Director

**Dr. Patricia Stromsta**

[pat.stromsta@kalamazoofirstpres.org](mailto:pat.stromsta@kalamazoofirstpres.org)  
Ext. 204

### Youth Director

**Rob Bradford** (269) 806-5196

[bradfordrr@gmail.com](mailto:bradfordrr@gmail.com)

### Director of Music

**Cynthia Hunter** (269) 377-2478

[cindy.hunter@kalamazoofirstpres.org](mailto:cindy.hunter@kalamazoofirstpres.org)

### Organist

**Elizabeth Bruce**

[elizabeth.bruce@kalamazoofirstpres.org](mailto:elizabeth.bruce@kalamazoofirstpres.org)

### Health Ministry Coordinator

**Ann Ross**

[ann.ross@kalamazoofirstpres.org](mailto:ann.ross@kalamazoofirstpres.org)  
Ext. 211

### Office Administrator

**Ann Johnson**

[ann.johnson@kalamazoofirstpres.org](mailto:ann.johnson@kalamazoofirstpres.org)  
Ext. 205

### Administrative Assistant

**Norma Clack**

[norma.clack@kalamazoofirstpres.org](mailto:norma.clack@kalamazoofirstpres.org)  
Ext. 209

### Financial Coordinator

**Louise Taylor**

[louise.taylor@kalamazoofirstpres.org](mailto:louise.taylor@kalamazoofirstpres.org)  
Ext. 206

### Building Superintendent

**Mike Noteboom**

[mike.noteboom@kalamazoofirstpres.org](mailto:mike.noteboom@kalamazoofirstpres.org)  
Ext. 213

### Custodians (Ext. 213):

**Shawn Smith**

[shawn.smith@kalamazoofirstpres.org](mailto:shawn.smith@kalamazoofirstpres.org)

**Randy Randt**

### South Lobby Receptionist (Ext. 221)

**Jim Cook**

**Nate Owens**

**Nik DeHaan**